

# Lago SPC Plus Installation Instructions

<b>LAGO Flooring</b> <b>SPC Plus Collection</b>	Tech Support: +1 (510) 778-8388 Email: <a href="mailto:info@lagoflooring.com">info@lagoflooring.com</a> <a href="https://www.lagoflooring.com">https://www.lagoflooring.com</a>	Installation Method Uniclic® Angle & Snap
--	---	---

## SAFETY AND HEALTH PRECAUTIONS

Power tools can be dangerous. Operate in strict accordance to manufacturer's operating instructions and safety precautions. Unsafe and improper use can cause serious injuries.

Wear appropriate personal protective equipment (PPE) which includes NIOSH or OSHA approve dust masks, safety goggles and work gloves.

### WARNING!

DO NOT SAND, DRY SWEEP, DRY SCRAPE, DRILL, SAW, BEAD-BLAST, OR MECHANICALLY CHIP OR PULVERIZE EXISTING RESILIENT FLOORING, BACKING, LINING FELT, ASPHALTIC "CUTBACK" ADHESIVES, OR OTHER ADHESIVES.

## TOOLS REQUIRED

Broom, Electric Saw (carbide blade), Eye and Ear Protection, Glue, Hammer, Painter's Tape, Pencil, Pull Bar, Straightedge (6 ft), Tape Measure, Utility Knife, Wall Spacers (1/4"), Wood Chisel.

## BEFORE-INSTALLATION

Lago SPC Plus can be installed directly over most existing floor coverings that the existing floor surface is flat, dry, clean and structurally sound. No loose grout, tile, or planks. Wood flooring glued to concrete must be removed before installation. Concrete must be smooth and permanently dry.

- **Prior to installation, inspect material in daylight for visible faults/damage.**
- **No claims on surface defects will be accepted after installation.**
- Check if sub-floor/site conditions comply with the specifications described in these instructions. If you are not satisfied, do not install, and contact your supplier.
- Flooring products can be damaged by rough handling before installation. Exercise care when handling and transporting these products. Store, transport and handle the flooring planks in a manner to prevent any damage. Store cartons flat, never on edge.
- Flooring products can be heavy and bulky. Always use proper lifting techniques when handling these products. Whenever possible, make use of material-handling equipment such as dollies or material carts. Never lift more than you can safely handle; get assistance.
- The environment where the flooring is to be installed is critically important with regard to successful installation and continued performance of the flooring products. The flooring is intended to be installed in interior locations only. These interior locations must meet climatic and structural requirements as well.
- Flooring should only be installed in temperature-controlled environments. It is necessary to maintain a constant temperature before, during and after the installation. Portable heaters are not recommended as they may not heat the room and sub-floor sufficiently. Kerosene heaters should never be used.
- For floor surfaces exceeding 6400ft<sup>2</sup> (620m<sup>2</sup>) and/or lengths exceeding 80 lineal feet (25m), use expansion moldings.
- Calculate the room surface prior to installation and plan an extra **5% -10%** of flooring for cutting waste.
- This product does not need acclimation.

## SUB-FLOOR CONDITION

### Do Not Install Over!

- Hardwood flooring / wood sub-floors that lay directly on concrete or over dimensional lumber or plywood used over concrete.
- Floating floor of any type, loose lay, and perimeter fastened sheet vinyl.
- Any type of carpet.
- Existing vinyl flooring.

## CONDITION

● Inspect your sub-floor before you begin, it must be clean, dry and level to 3/16" (5mm) within a 10 feet (3 meters). Substrates must be free from excessive moisture or alkali. Remove dirt, paint, varnish, wax, oils, solvents, any foreign matter and contaminates.

- Do not use products containing petroleum, solvents or citrus oils to prepare substrates as they can cause staining and expansion of the new flooring.
- Although SPC Plus is waterproof, it is not aimed to be used as a moisture barrier. The sub-floor must be dry. Concrete moisture vapor emissions should not exceed 8lbs ASTM F1869 or 90%RH (ASTM F2170) with a PH limit of 9. For floors outside of this range, a 6 mil poly-film is required.
- This product is also not to be installed in areas that have a risk of flooding such as saunas or outdoor areas.

#### **Plywood Sub-Floor**

- If this flooring is intended to be installed over an existing wooden floor, it is recommended to repair any loose boards or squeaks before you begin the installation.
- Nail or screw every 6" (15 cm) along joists to avoid squeaking.
- Basements and crawl spaces must be dry. A 6-mil black polyethylene is required to cover 100% of the crawl space.
- We recommend laying on wooden floors cross-ways to the existing flooring.
- All other sub-floors, like plywood, OSB, particleboard, chipboard, wafer board, etc. must be structurally sound and must be installed following their manufacturer's recommendations.

#### **Concrete Sub-Floor**

- Floors must be fully cured, at least 60 days old, smooth, permanently dry, clean, and free of all foreign material such as dust, wax, solvents, paint, grease, oils, and old adhesive residue. Curing agents and hardeners could cause bonding failure and should not be used.
- Depressions, deep grooves, expansion joints and other sub-floor imperfections must be filled with patching & leveling compound.
- Concrete substrates must be flat within 1/8 of an inch (3mm) within a 6-foot (2 meters) radius, or 3/16 of an inch (5mm) within a 10-foot radius (3 meters). The substrate should not slope more than 1 inch (2.5cm) per 6 feet (2 meters) in any direction.
- Moisture and alkalinity tests should be performed on all concrete substrates regardless of grade level or age of slab. Perform either ASTM F2170 In-Situ Relative Humidity (RH) test or ASTM F1869 Calcium Chloride Moisture Test (MVER: Moisture Vapor Emission Rating). Perform pH test per ASTM F710 to determine alkalinity of the slab.
- Concrete moisture vapor emissions should not exceed 8lbs ASTM F1869 or 90%RH (ASTM F2170) with a PH limit of 9. For floors outside of this range a 6 mil poly-film is required.
- Lago Flooring Limited Warranty does not cover discoloration from mold or from flooding, floods, leaking plumbing or appliances, water entering through sliding glass doorways, as well as floor covering failure due to hydrostatic pressure or moisture vapor emission.

#### **Existing Floors**

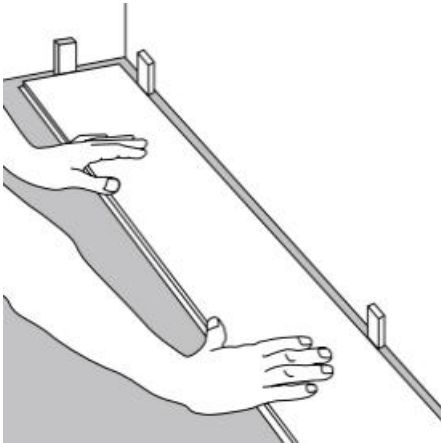
- Lago SPC Plus Flooring may be installed over most existing smooth, single layer, hard surface or uncushioned resilient flooring. Check resilient flooring for any curled areas around the perimeter or at seams and repair if necessary.
- Use a good quality cementitious based embossing leveler to smooth and fill the existing floor. Do not install over carpet, cushioned backed resilient floor, or any floating or loose-laid flooring.

---

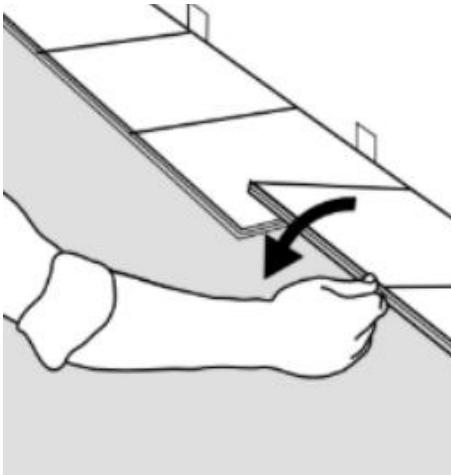
#### **Installation**

- First, remove baseboards, quarter-rounds, appliances and furniture from the room. Door trim should be under-cut to allow flooring to move freely without being pinched. Then, sweep and vacuum the entire work area to remove all dust.
- Whenever possible, plan the layout so that the joints in the planks do not fall on top of joints or seams in the existing substrate. The end joints of the planks should be staggered a minimum of 8" (20.32 cm) apart. Do not install over expansion joints. Avoid installing pieces shorter than 12" (30 cm) at beginning or end of rows.
- Floating floor, you must ensure you leave a 1/4" (6mm) gap between walls and fixtures such as pipes and pillars, stairs, etc. You can use moldings to cover the gaps after the installation of flooring.  
Tip: When installing around pipes, drill the holes 1/2" (12mm) larger than the diameter of the pipes.
- Do not install your kitchen cabinets directly over your floor. The floor's quality can be guaranteed as long as the floor can move freely.
- Decide the installation direction. It is recommended to install the length direction of the planks parallel to the main light direction.
- Measure the area to be installed: The board width of the last row shall not be less than 2" (50mm). If so, adjust the width of the first row to be installed. In narrow hallways, it is recommended to install the floor parallel to the length of the hall.

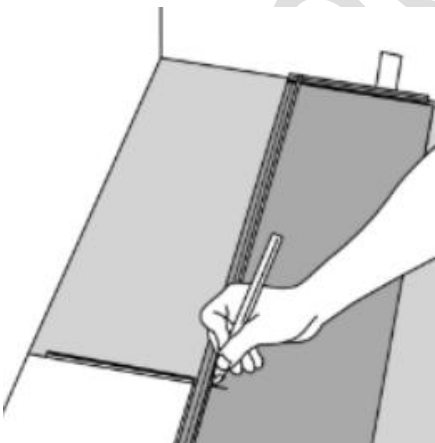
(1) You should begin in the left-hand corner. Position the first plank so that grooved edge is facing you. Place the floorboard 1/4" (6mm) from the left wall. Use spacers between the wall and the floorboard.



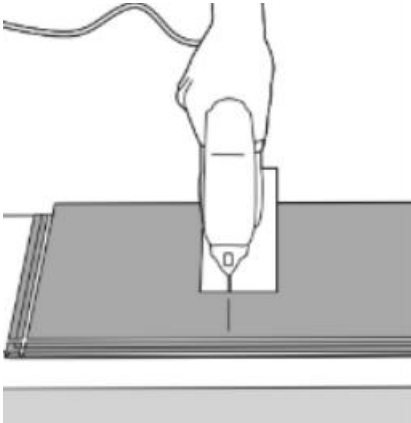
(2) Place the second plank with space away from the previous plank's click mechanism.



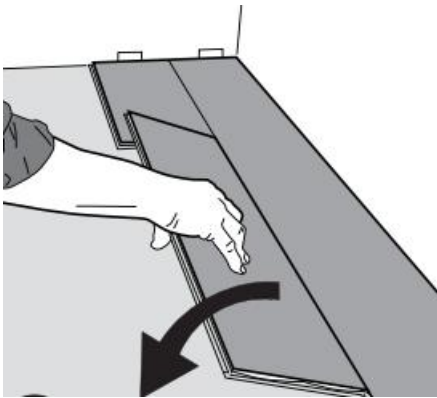
(3) Keep the second plank into the flat position then gently tap the plank toward the previous piece. The following pieces should connect when click together. Finish the rest of the row by same way.



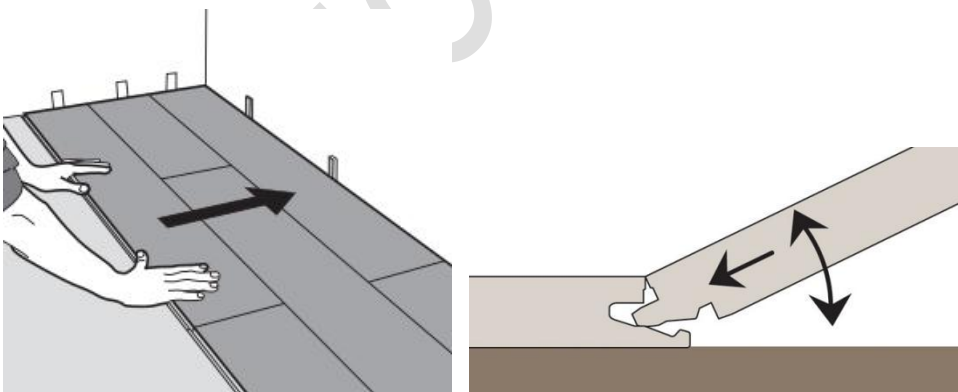
(4) Place the final plank with the top side facing up, the remaining expansion space should be at least a minimum of 1/4" towards the wall. Cut the plank according to a pencil line.



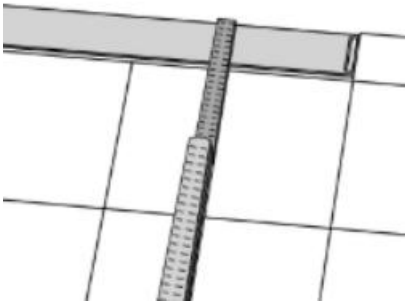
(5) Place the plank face down on the work surface and cut to size with a power saw or score and snap with a razor. If you are using a hand saw, use a fine-toothed blade, and cut the planks face up.



(6) Connect the planks in the following rows by aligning the end seam of each plank at least 4" away from the end seam in the prior 2 rows and 12" away from the end seam in the prior row. Insert the long side seam at a slight angle first, and as the top surfaces meet, rotate the plank down into the locked position.

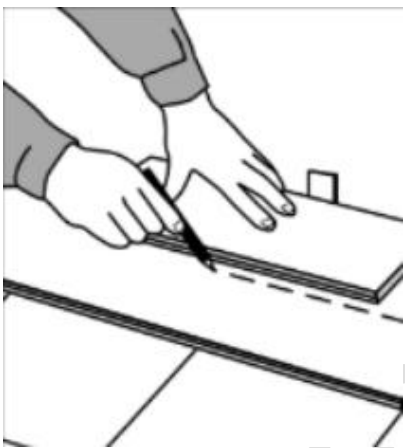


(7) Remember to place the flooring with a minimum of 1/8" from all walls or other vertical obstructions such as cabinets, fireplace, etc.

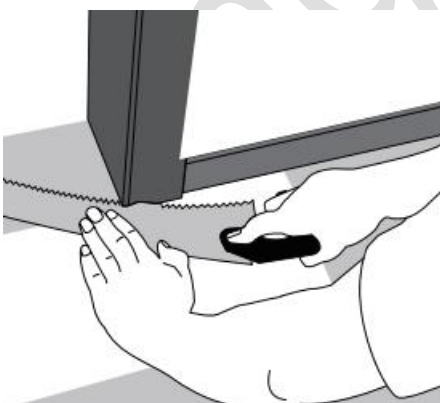


(8) After the first 2-3 rows of planks are installed, they should be checked with a string line to ensure that rows are still running straight. If they are not, it could be that the starting wall has some irregularities that caused bowing in the installation. If so, the starting row of planks may have to be scribed and re-trimmed to account for any unevenness in the wall. This can be done without having to disassemble the beginning rows.

(9) To lay the last row, use a full width scrap plank to mark your cutting line on the last row. Draw a line along the edge of this boards, to mark the board. The last row should be at least 2" (50mm) wide. The spacers can then be removed.



(10) In the area of door molding and skirting: lay a board (with the wood-looking side down) next to the door molding and as saw shown in the figure. Then slide the floorboard under molding.



(11) Replace baseboards or moldings, allowing slight clearance between the molding and the planks. Nail the baseboards or molding to the wall instead of flooring. Use a T molding or Reducer at doorways and at other areas where the flooring planks may meet other surfaces, to cover the exposed edge but not pinch the planks. Leave a small gap between the planks and the adjoining surface.

**Attention**

- Randomly pull planks from 3 cartons at a time, use random length start planks (minimum of 16") to ensure a more natural look.
- All joints should be a tight fit with no gaps. Stop and reconnect if a joint is not tight or if all edges are not even with adjacent planks. These planks can be engaged and disengaged up to 10 times if needed to make a correct installation.
- If extreme difficulties occurred, please contact your distributor or Lago Flooring Inc.

---

**MAINTENANCE**

- Sweep or vacuum flooring daily using soft bristle and/or with a professional vinyl floor cleanser.
- Clean up spills and excessive liquids immediately.
- Clean up potential stains as soon as possible.
- Use proper floor protection devices such as felt protectors under furniture.
- Do not use abrasive cleaners, bleach or wax to maintain the floor.
- When using a dolly to move furniture or appliances. Protective sheets and/or plywood may be needed. Never slide or roll heavy furniture or appliances across the flooring.
- Frequently moved furniture should be equipped with felt pads to avoid scratching the floor. Heavy furniture and appliances should be equipped with non-staining large surface floor protectors. Furniture with castors or wheels must be easy swiveling, large surface non-staining and suitable for resilient floors. Do NOT use ball type castors as they can damage the floor.
- Caster wheeled chairs should have wide, rubber casters. Place protective mats under of office chairs.
- Use floor protectors under furniture to reduce indentation. As a general rule of thumb, the heavier the item, the wider the floor protector needed.

---

**Notes**

Lago Flooring does not grant to any person or entity the authority to create for it any obligation or liability in connection with its product. Lago Flooring shall not be liable to the consumer or any other person or entity for any incidental, special or consequential damages. Lago Flooring reserves the right to adjust, update or modify the terms of this installation guide without notice.

---